



## **Flin Flon Soils Study**

# **An Assessment of Exposure and Human Health Risks in the Flin Flon Area**

*Presentation to Healthy Flin Flon, October 4<sup>th</sup>, 2010*

# WHY WAS THE STUDY CONDUCTED?

- 2007 Manitoba Conservation report;  
*“Concentrations of Metals and Other Elements in Surface Soils of Flin Flon, Manitoba and Creighton, Saskatchewan, 2006”*
- Levels of some metals were elevated in soil but there was no immediate risk to human health
- The report recommended further study to better understand potential health risks for people living in the Flin Flon area related to the HBMS smelter emissions
- The Flin Flon Soils Study was the result of this recommendation.

---

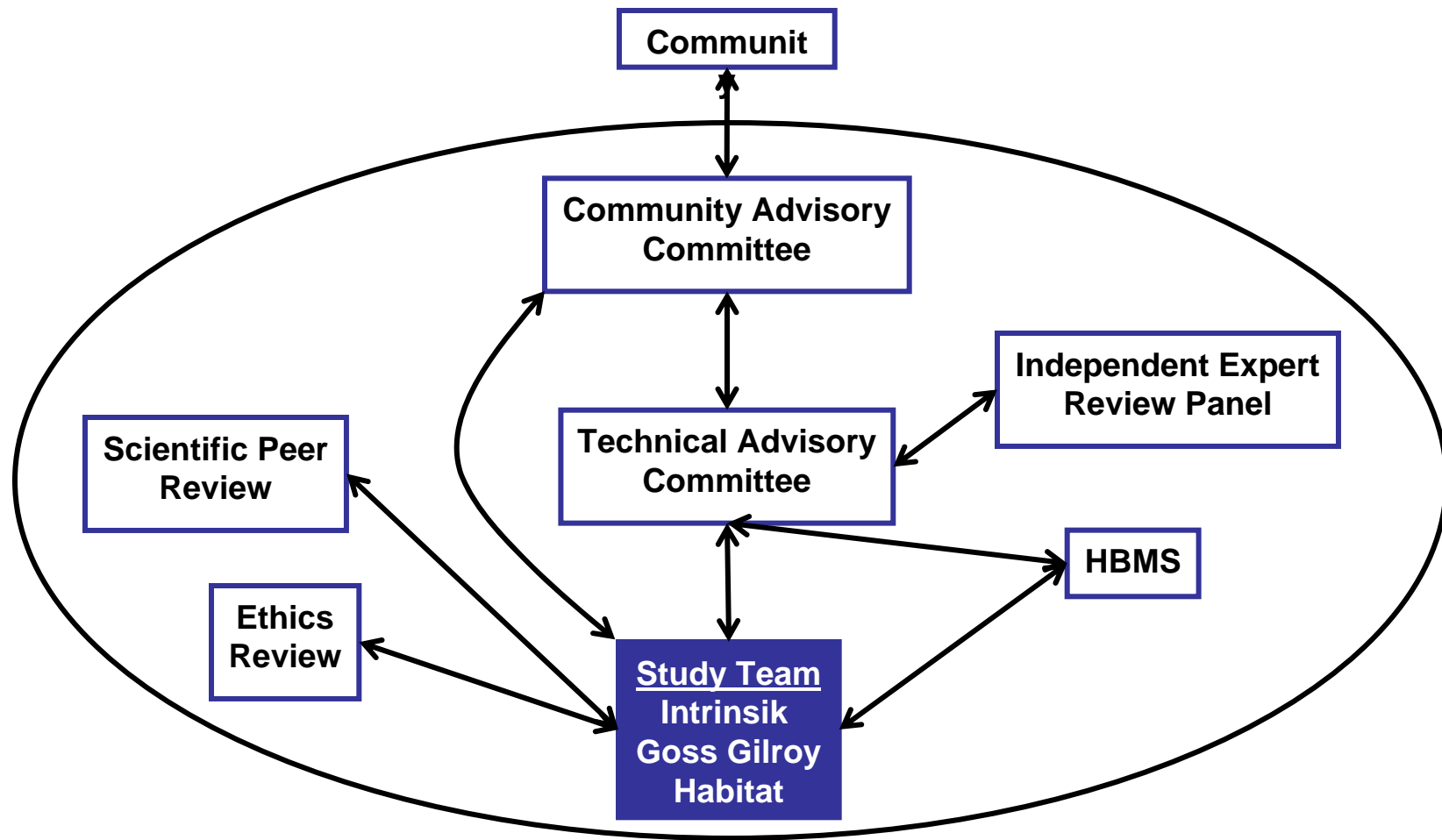
## QUESTIONS THAT WILL BE ANSWERED

- Why was the Flin Flon Soils Study conducted?
- Who conducted the study?
- How was the study conducted?
- What did the study find?
- What happens now?
- How do I get more information?

***The overall conclusion of the Flin Flon Soils Study is that the likelihood of health effects among Flin Flon area residents from exposure to the metals evaluated is negligible to low***

---

# WHO CONDUCTED THE STUDY



---

# COMMUNITY ADVISORY COMMITTEE

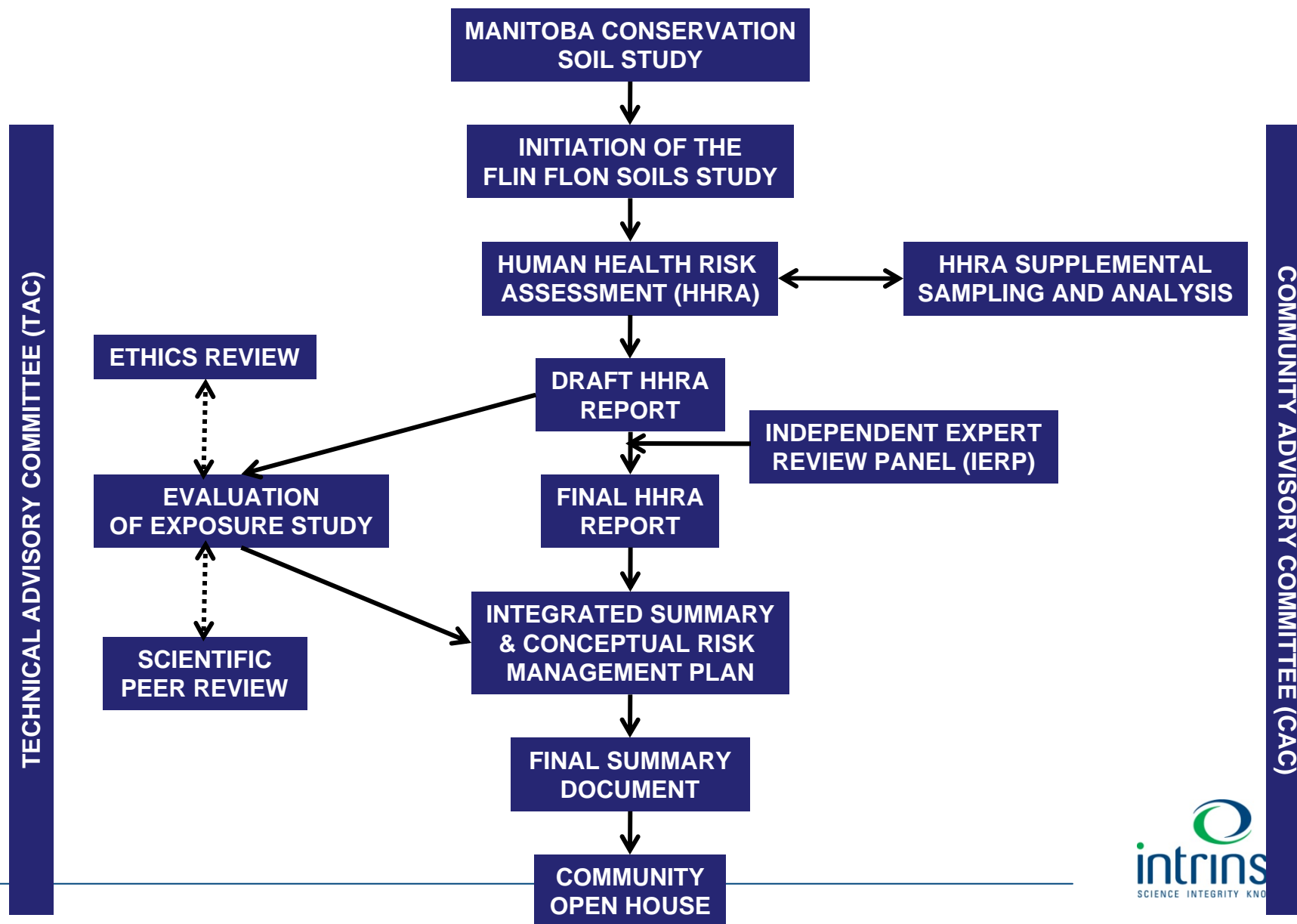
- The CAC consists of interested members of the public, including representatives of local organizations
- The CAC was formed to provide public input to the process, as well as to help make the study an open, transparent process from start to finish

---

# TECHNICAL ADVISORY COMMITTEE

- Manitoba Conservation
- Manitoba Health
- Manitoba Innovation, Energy and Mines (IEM)
- Saskatchewan Ministry of Environment
- Saskatchewan Ministry of Health
- Health Canada
- Representatives from the CAC

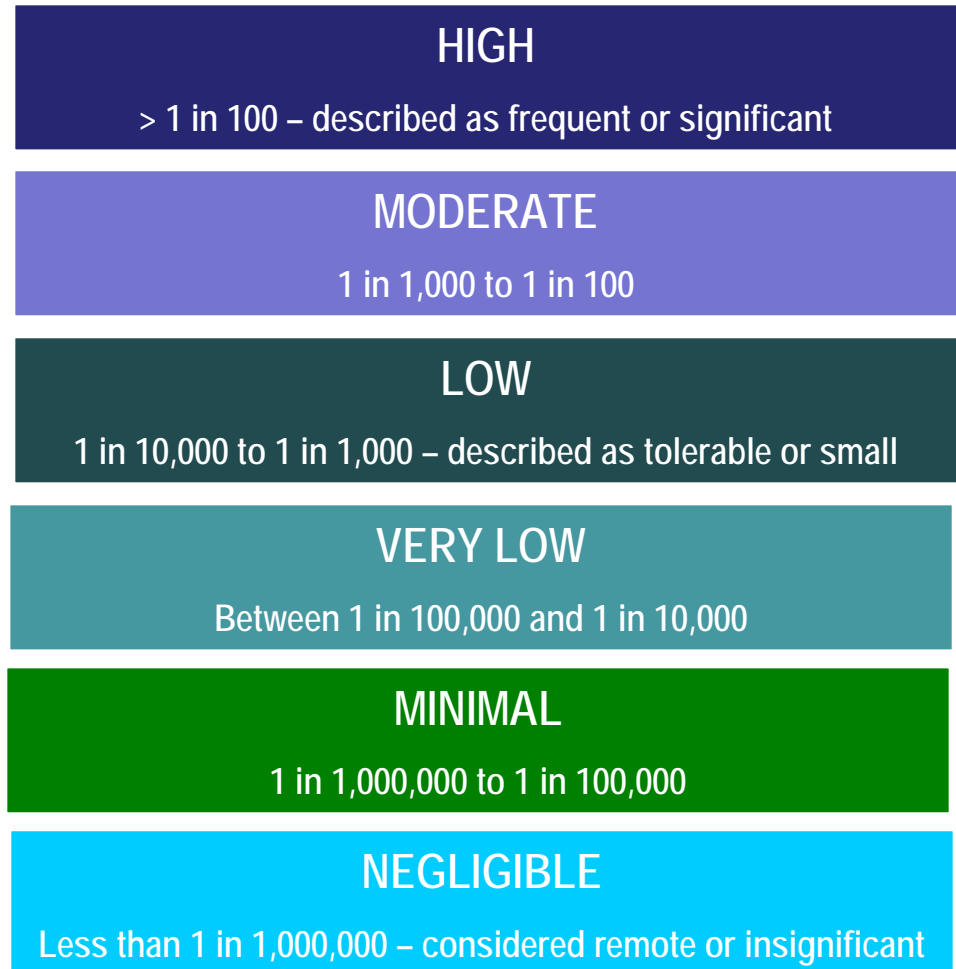
# HOW WAS THE STUDY CONDUCTED?



---

# OVERALL RESULTS: WHAT DID THE FLIN FLON SOILS STUDY FIND?

- ***The overall conclusion of the Flin Flon Soils Study is that the likelihood of health effects among Flin Flon area residents from exposure to the metals evaluated is negligible to low***





---

## NEXT STEPS: WHAT HAPPENS NOW?

- ***Overall, the findings from these studies are reassuring, but some low level risks were identified from some metals. Reducing air emissions, continued monitoring and some additional precautionary measures are recommended.***
- The HBMS smelter ceased operations in mid-June 2010.
  - It is recommended that air monitoring programs continue to confirm that concentrations of metals in the air decrease
- It is recommended that the Provinces evaluate the need for recreational fish advisories on the lakes with increased fish mercury concentrations identified in this study

---

## NEXT STEPS (continued)

- Based on the outcome of the HHRA and exposure studies, recommendations have been made to address lead in the environment
- The recommendations includes exposure reduction strategies including general education and best cleaning practices
- A follow-up blood lead analysis is recommended in the fall of 2012 to assess the effectiveness of these exposure reduction strategies
- ***Based on the results of the Flin Flon Soils Study, the removal or management of soils in the community are not justified at this time.***

---

## COMMENTS/QUESTIONS

- **By MAIL:** Flin Flon Soils Study – Public Comments  
c/o Intrinsic Environmental Science Inc.  
500-6605 Hurontario Street  
Mississauga, ON L5T 0A3
- **By EMAIL:** [comments@flinflonsoilsstudy.com](mailto:comments@flinflonsoilsstudy.com)
- **By INTERNET:** [www.flinflonsoilsstudy.com](http://www.flinflonsoilsstudy.com)
- **By PHONE:** 204-271-3792
  
- **For more information:**
  - Community Open House
  - Flin Flon City Council Chambers
  - 4 pm to 8 pm; detailed presentation at 6:30